

VORTEX



No excuses. No compromises.





What's your passion: A cutting edge
adventure or a weekend of relaxation?

Either way, the 2008 Vortex by Thor

California is the choice to complement your

uncompromising lifestyle. The Vortex arrives

packed with features, including a deluxe

ramp door with easy locking mechanisms

and available pump station. Experience the

Vortex today—no excuses, no compromises.



ISLAND PALM



BUCKSKIN



ONYX



Countertop / Flooring / Carpet

COLORS, EQUIPMENT AND SPECIFICATIONS DEPICTED IN THIS BROCHURE ARE SUBJECT TO CHANGE WITHOUT NOTICE. PHOTOGRAPHS MAY CONTAIN FEATURES THAT ARE OPTIONAL ON YOUR VEHICLE. PLEASE VERIFY THE ACTUAL EQUIPMENT INSTALLED ON ANY SPECIFIC VEHICLE PRIOR TO PURCHASE.

FEATHERWEIGHT FLOORPLANS

WIDE BODY FLOORPLANS

	19 FB	19 FK	22 FB	22 FK	23 FS	26 FS	28 L	31 L	224 FB	244 FS	284 SA	285 FW	304 FS	3450	3950
OVERALL LENGTH	23' 1"	23' 1"	26' 1"	26' 1"	27' 1"	30' 1"	29' 7"	32' 7"	26' 2"	28' 6"	32' 3"	29' 5"	33' 8"	34' 8"	39' 6"
FLOOR LENGTH	19' 3"	19' 3"	22' 3"	22' 3"	23' 2"	26' 2"	28' 4"	31' 4"	22' 2"	24' 6"	28' 3"	28' 1"	29' 8"	33' 4"	38' 2"
CARGO LENGTH	12' 5"	14' 5"	15' 5"	17' 5"	10' 9"	14'	15'	18'	16' 2"	14' 8"	12' 3"	15'	20' 1"	18' 3"	12'
OVERALL WIDTH	96"	96"	96"	96"	96"	96"	96"	96"	102"	102"	102"	102"	102"	102"	102"
OVERALL HEIGHT*	11' 4"	11' 4"	11' 4"	11' 4"	11' 4"	11' 4"	11' 10"	11' 10"	11' 8"	11' 8"	12' 2"	11' 6"	11' 8"	13' 3"	13' 3"
GVWR	7,400	7,400	7,700	7,700	7,700	9,000	10,900	10,900	10,700	12,400	13,000	13,000	14,000	16,646	17,200
DRY WEIGHT**	4,420	4,420	4,820	4,825	5,025	5,545	6,565	7,235	6,950	7,350	7,950	8,900	8,300	10,682	12,200
PAYLOAD	2,980	2,980	2,880	2,875	2,675	3,455	4,335	3,665	3,750	5,050	5,050	4,100	5,700	5,964	5,000
HITCH WEIGHT	800	800	900	900	800	915	1,650	1,765	850	1,050	1,300	1,900	1,350	2,812	2,600
FUEL TANK***	27	27	27	27	27	27	27	27	30	30	30	30	30	30	30
FRESH WATER****	102	102	102	102	102	102	102	102	120	120	120	124	120	124	124
GRAY/BLACK	30/30	30/30	30/30	30/30	30/30	30/30	30/30	30/30	45/40	45/40	45/40	45/45	45/40	96/48	96/48

*From ground to top of A/C

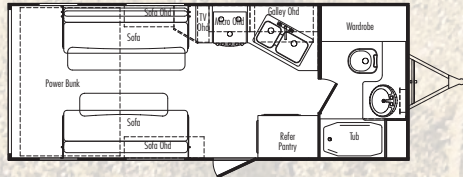
**Includes usual build options on wide bodies

***Includes standard features on FeatherWeights

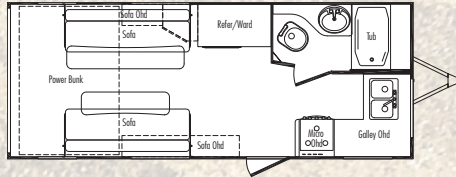
****Optional feature on FeatherWeights

*****Includes water heater

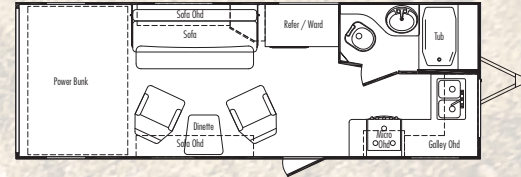
Featherweight Floorplans



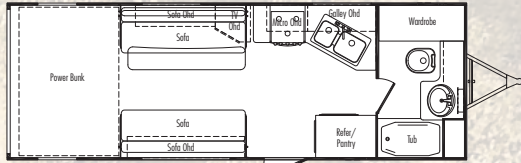
19 FB FEATHERWEIGHT TRAVEL TRAILER



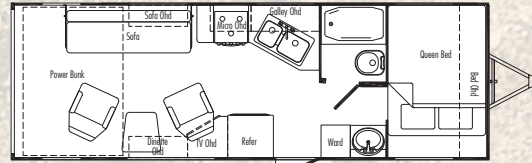
19 FK FEATHERWEIGHT TRAVEL TRAILER



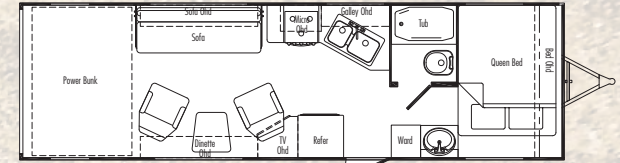
22 FK FEATHERWEIGHT TRAVEL TRAILER



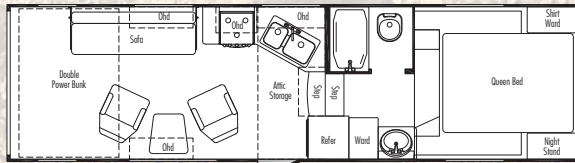
22 FB FEATHERWEIGHT TRAVEL TRAILER



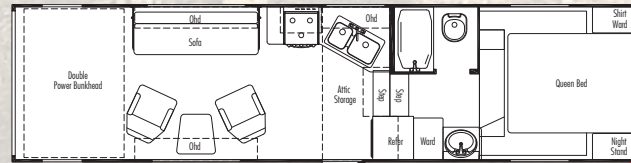
23 FS FEATHERWEIGHT TRAVEL TRAILER



26 FS FEATHERWEIGHT TRAVEL TRAILER

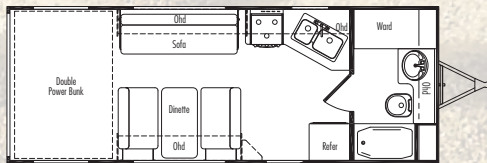


28 L FEATHERWEIGHT FIFTH WHEEL

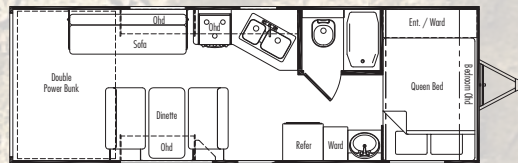


31 L FEATHERWEIGHT FIFTH WHEEL

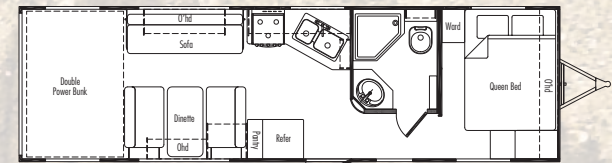
NEW FOR 2008



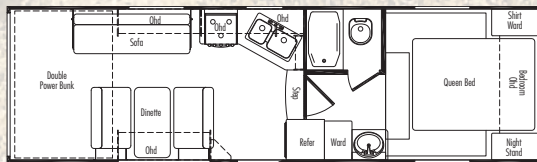
224 FB WIDE BODY TRAVEL TRAILER



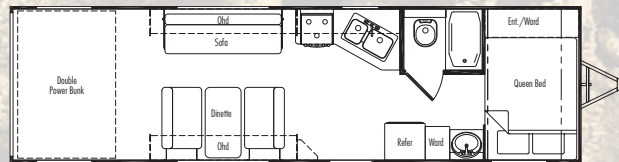
244 FS WIDE BODY TRAVEL TRAILER



284 SA WIDE BODY TRAVEL TRAILER



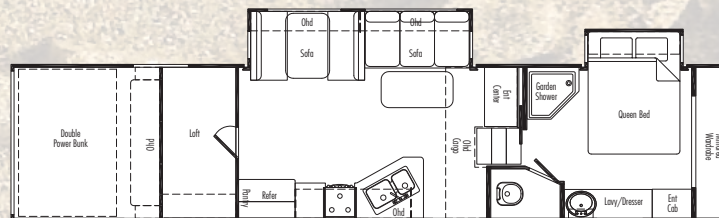
285 FW WIDE BODY FIFTH WHEEL



304 FS WIDE BODY TRAVEL TRAILER



3450 S FW WIDE BODY FIFTH WHEEL



3950 GSS FW WIDE BODY FIFTH WHEEL

Wide Body Floorplans

"Dare to Compare" list of features:


YOUR LOCAL DEALER


 Visit us on the web at
www.thorca.com

	Competitor A		Competitor B	
	Standard	Optional	Standard	Optional
Aluminum-framed, laminated sidewalls with glossy fiberglass	✓			
Durable I-beam chassis with full-height welded cross-members	✓			
Deluxe ramp door with integrated springs and easy locking mechanisms	✓			
Large exterior storage compartments	✓			
EZ-Lube axles for easy maintenance	✓			
Crowned roof with residential bow truss including one-piece seamless rubber covering	✓			
Rear electric queen bunks (most models)	✓			
Large deluxe roll up patio awning	✓			
Black tank Sani-Flush rinse system	✓			
Full coach resilient designer vinyl flooring	✓			
Flush-mounted D-ring chassis-secured tie downs	✓			
One piece 5/8" OSB floor construction	✓			
Solid hardwood doors and drawers with deluxe ball bearing roller guides	✓			
Oversized interior cabinets to accommodate large dishes	✓			
Fast recovery gas/electric DSI water heater	✓			
Quick-battery disconnect	✓			
Inverter-ready	✓			
Stainless steel double bowl sink with metal faucet in angled kitchen	✓			
Dark tinted safety glass windows	✓			
Structural A-frame with battery tray (travel trailers)	✓			
Automotive bulb seals on windows	✓			
Deep tub and shower combination	✓			