

TAHOE

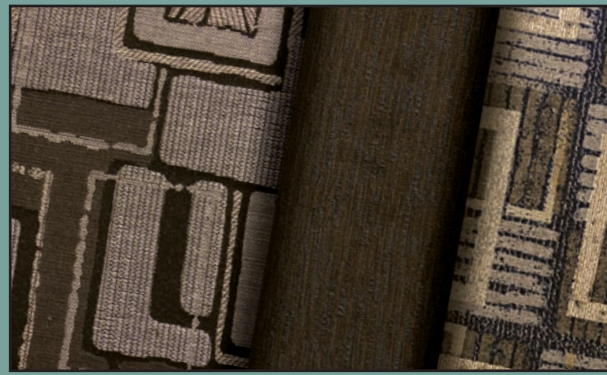


Don't settle for ordinary.



TAHOE

Soothe your craving for adventure in the 2008 Tahoe by Thor California. Striking the ideal balance between function and style, Tahoe features deluxe amenities like cabinets with hardwood doors and drawers, designer countertops, stylish yet rugged flooring and aluminum-framed fiberglass sidewalls. Expect more out of your toy hauler. Don't settle for ordinary.



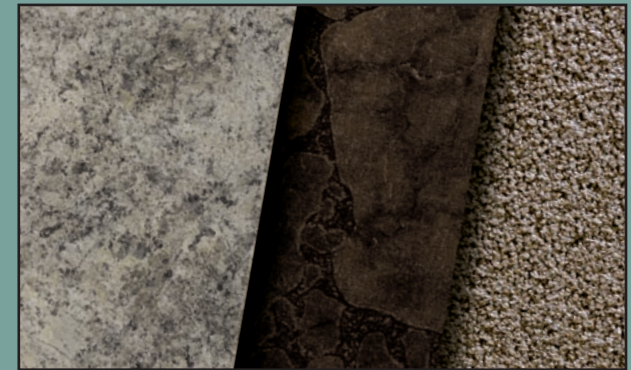
SHOCKWAVE



SPICE



BAMBOO



Countertop / Flooring / Carpet

COLORS, EQUIPMENT AND SPECIFICATIONS DEPICTED IN THIS BROCHURE ARE SUBJECT TO CHANGE WITHOUT NOTICE. PHOTOGRAPHS MAY CONTAIN FEATURES THAT ARE OPTIONAL ON YOUR VEHICLE. PLEASE VERIFY THE ACTUAL EQUIPMENT INSTALLED ON ANY SPECIFIC VEHICLE PRIOR TO PURCHASE.

LIGHTHAULER FLOORPLANS

WIDE BODY FLOORPLANS

	19 FB	19 FK	22 FB	22 FK	23 FS	26 FS	28 L	31 L	224 FB	244 FS	284 SA	285 FW	304 FS	3450	3950
OVERALL LENGTH	23' 1"	23' 1"	26' 1"	26' 1"	27' 1"	30' 1"	29' 7"	32' 7"	26' 2"	28' 6"	32' 3"	29' 5"	33' 8"	34' 8"	39' 6"
FLOOR LENGTH	19' 3"	19' 3"	22' 3"	22' 3"	23' 2"	26' 2"	28' 4"	31' 4"	22' 2"	24' 6"	28' 3"	28' 1"	29' 8"	33' 4"	38' 2"
CARGO LENGTH	12' 5"	14' 5"	15' 5"	17' 5"	10' 9"	14'	15'	18'	16' 2"	14' 8"	12' 3"	15'	20' 1"	18' 3"	12'
OVERALL WIDTH	96"	96"	96"	96"	96"	96"	96"	96"	102"	102"	102"	102"	102"	102"	102"
OVERALL HEIGHT*	11' 4"	11' 4"	11' 4"	11' 4"	11' 4"	11' 4"	11' 10"	11' 10"	11' 8"	11' 8"	12' 2"	11' 6"	11' 8"	13' 3"	13' 3"
GVWR	7,400	7,400	7,700	7,700	7,700	9,000	10,900	10,900	10,700	12,400	13,000	13,000	14,000	16,646	17,200
DRY WEIGHT**	4,420	4,420	4,820	4,825	5,025	5,545	6,565	7,235	6,950	7,350	7,950	8,900	8,300	10,682	12,200
PAYLOAD	2,980	2,980	2,880	2,875	2,675	3,455	4,335	3,665	3,750	5,050	5,050	4,100	5,700	5,964	5,000
HITCH WEIGHT	800	800	900	900	800	915	1,650	1,765	850	1,050	1,300	1,900	1,350	2,812	2,600
FUEL TANK***	27	27	27	27	27	27	27	27	30	30	30	30	30	30	30
FRESH WATER****	102	102	102	102	102	102	102	102	120	120	120	124	120	124	124
GRAY/BLACK	30/30	30/30	30/30	30/30	30/30	30/30	30/30	30/30	45/40	45/40	45/40	45/45	45/40	96/48	96/48

*From ground to top of A/C

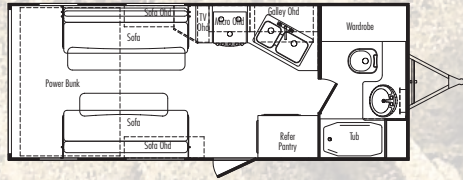
**Includes usual build options on wide bodies

***Includes standard features on LightHaulers

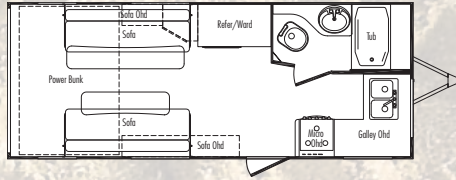
****Optional feature on LightHaulers

*****Includes water heater

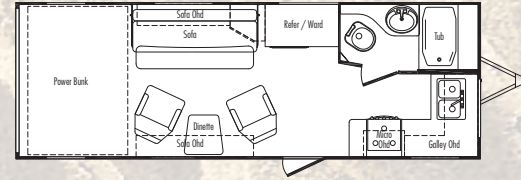
Lighthauler Floorplans



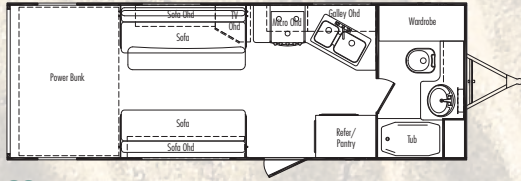
19 FB LIGHTHAULER TRAVEL TRAILER



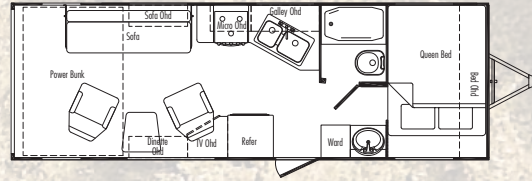
19 FK LIGHTHAULER TRAVEL TRAILER



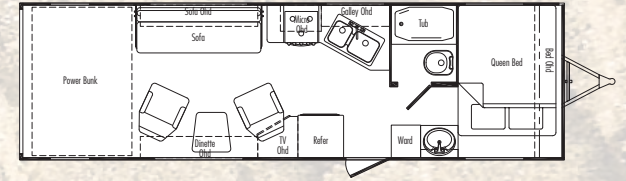
22 FK LIGHTHAULER TRAVEL TRAILER



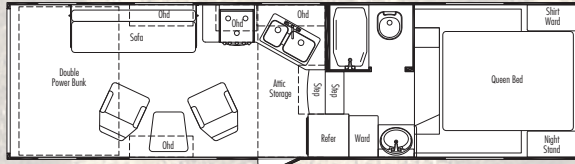
22 FB LIGHTHAULER TRAVEL TRAILER



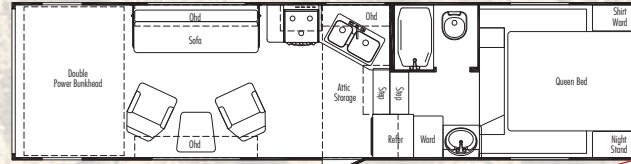
23 FS LIGHTHAULER TRAVEL TRAILER



26 FS LIGHTHAULER TRAVEL TRAILER

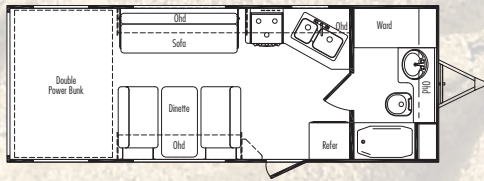


28 L LIGHTHAULER FIFTH WHEEL



31 L LIGHTHAULER FIFTH WHEEL

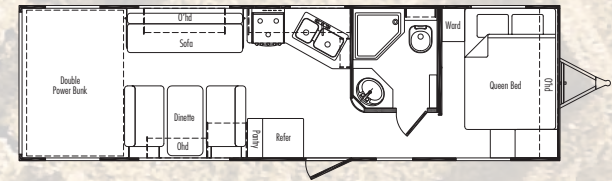
NEW FOR 2008



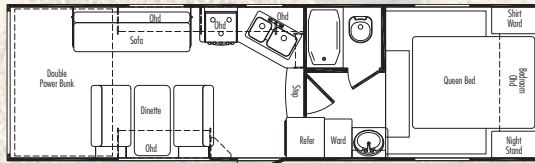
224 FB WIDE BODY TRAVEL TRAILER



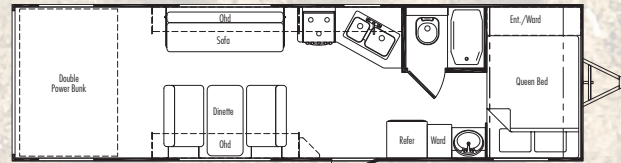
244 FS WIDE BODY TRAVEL TRAILER



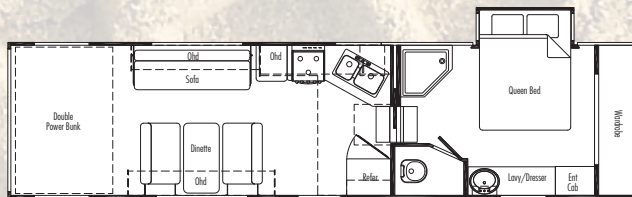
284 SA WIDE BODY TRAVEL TRAILER



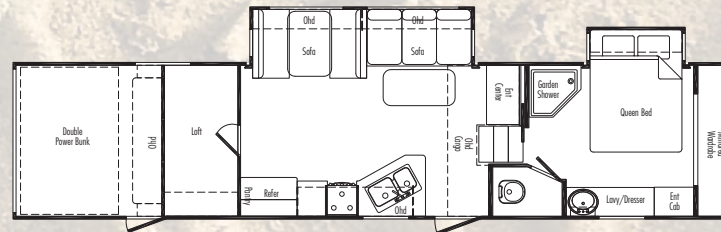
285 FW WIDE BODY FIFTH WHEEL



304 FS WIDE BODY TRAVEL TRAILER



3450 S FW WIDE BODY FIFTH WHEEL



3950 GSS FW WIDE BODY FIFTH WHEEL

Wide Body Floorplans

"Dare to Compare" list of features:

YOUR LOCAL DEALER



	Competitor A		Competitor B	
	Standard	Optional	Standard	Optional
Aluminum-framed, laminated sidewalls with glossy fiberglass	✓			
Durable I-beam chassis with full-height welded cross-members	✓			
Deluxe ramp door with integrated springs and easy locking mechanisms	✓			
Large exterior storage compartments	✓			
EZ-Lube axles for easy maintenance	✓			
Crowned roof with residential bow truss including one-piece seamless rubber covering	✓			
Rear electric queen bunks (most models)	✓			
Large deluxe roll up patio awning	✓			
Black tank Sani-Flush rinse system	✓			
Full coach resilient designer vinyl flooring	✓			
Flush-mounted D-ring chassis-secured tie downs	✓			
One piece 5/8" OSB floor construction	✓			
Solid hardwood doors and drawers with deluxe ball bearing roller guides	✓			
Oversized interior cabinets to accommodate large dishes	✓			
Fast recovery gas/electric DSI water heater	✓			
Quick-battery disconnect	✓			
Inverter-ready	✓			
Stainless steel double bowl sink with metal faucet in angled kitchen	✓			
Dark tinted safety glass windows	✓			
Structural A-frame with battery tray (travel trailers)	✓			
Automotive bulb seals on windows	✓			
Deep tub and shower combination	✓			


 Visit us on the web at
www.thorca.com
THORCALIFORNIA

 14255 Elsworth Street • Moreno Valley, CA 92553-9013 • Phone: 951/697.4190 • Fax: 951/697.4189 • www.thorca.com